



Yale SCHOOL OF MANAGEMENT
Program on Financial Stability

EliScholar – A Digital Platform for Scholarly Publishing at Yale

YPFS Resource Library

9-23-2010

Additional Exhibits to the Financial Crisis Inquiry Commission

Mark M. Fleming

<https://elischolar.library.yale.edu/ypfs-documents/6022>

This resource is brought to you for free and open access by the Yale Program on Financial Stability and [EliScholar](#), a digital platform for scholarly publishing provided by Yale University Library. For more information, please contact ypfs@yale.edu.

Additional Exhibits to the Financial Crisis Inquiry Commission

Sacramento, California Field Hearing, September 23, 2010

Mark M. Fleming, Ph.D.

Chief Economist

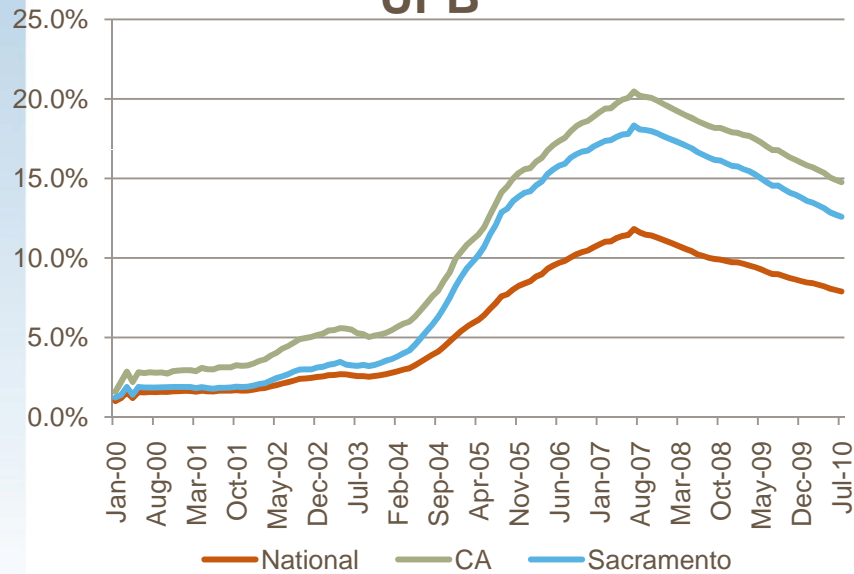
CoreLogic, Inc.

Figure 17



Unpaid Principal Balance Loan Type Share

Alt-A Share of Outstanding UPB



Subprime Share of Outstanding UPB

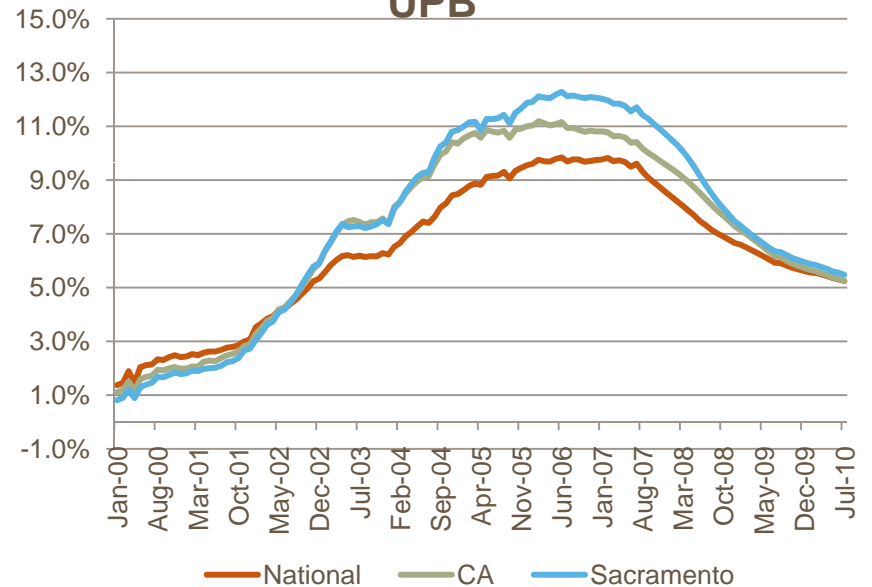
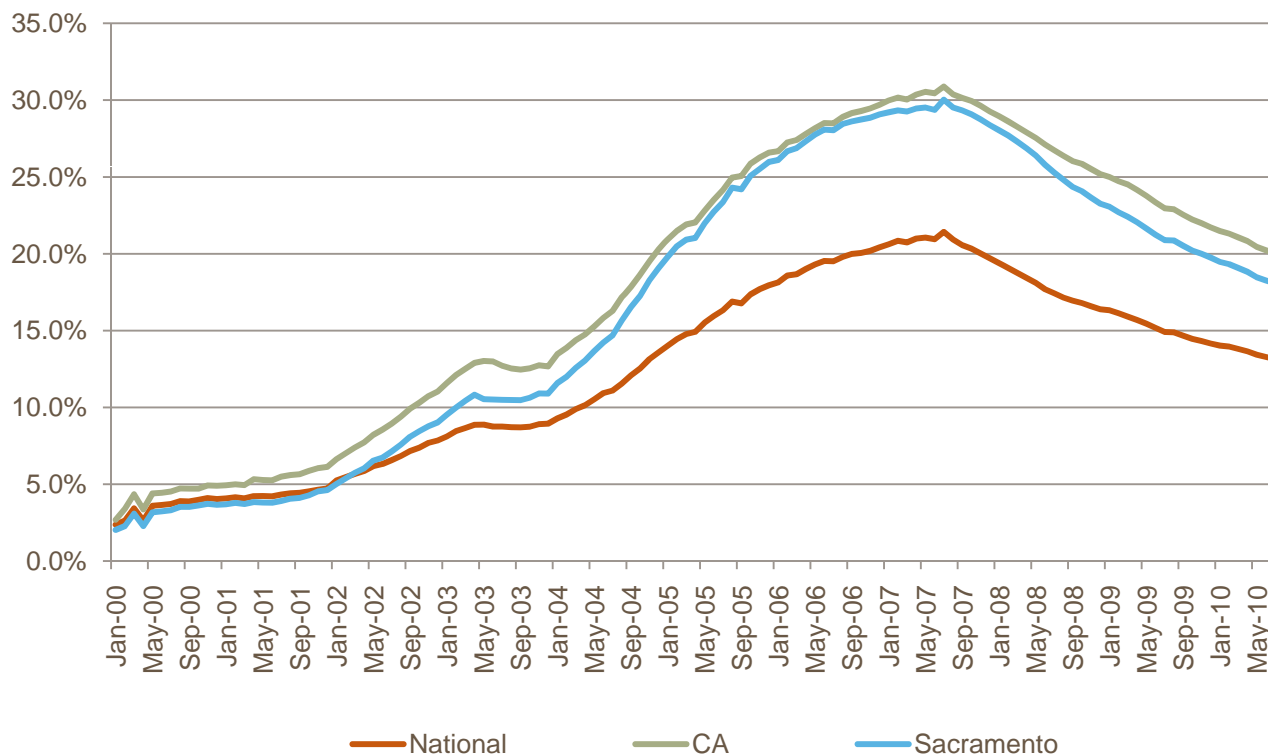


Figure 18



Unpaid Principal Balance Loan Type Share

Alt-A and Subprime Combined Share of Outstanding UPB



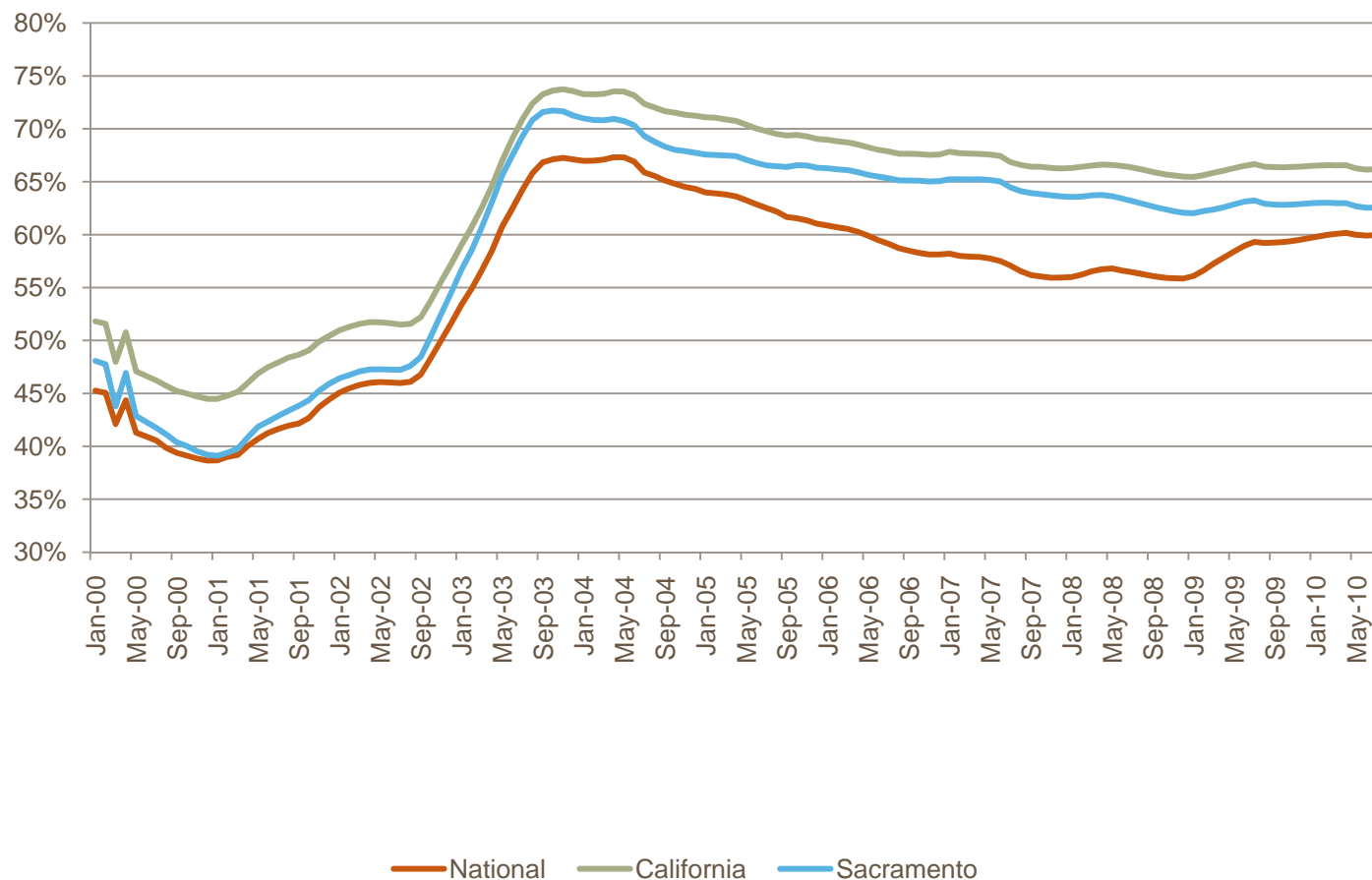
Source: CoreLogic, July 2010
©2010 CoreLogic.

Figure 19



Unpaid Principal Balance Refinance Share

Refinance Share



Source: CoreLogic, July 2010
©2010 CoreLogic.