

8-5-1931

General Hospital Society of Connecticut 1930 - 1931

General Hospital Society of Connecticut

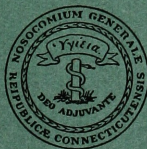
Follow this and additional works at: http://elischolar.library.yale.edu/ynhh_annual_reports

Recommended Citation

General Hospital Society of Connecticut, "General Hospital Society of Connecticut 1930 - 1931" (1931). *Yale-New Haven Hospital Annual Reports*. 9.
http://elischolar.library.yale.edu/ynhh_annual_reports/9

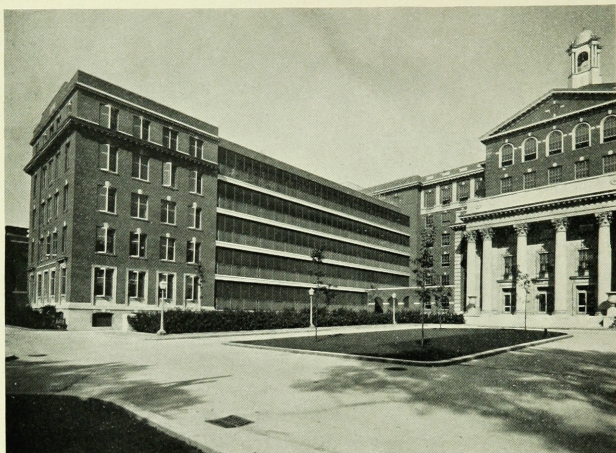
This Article is brought to you for free and open access by the Yale–New Haven Hospital at EliScholar – A Digital Platform for Scholarly Publishing at Yale. It has been accepted for inclusion in Yale-New Haven Hospital Annual Reports by an authorized administrator of EliScholar – A Digital Platform for Scholarly Publishing at Yale. For more information, please contact elischolar@yale.edu.

General Hospital Society
of Connecticut
1930-1931

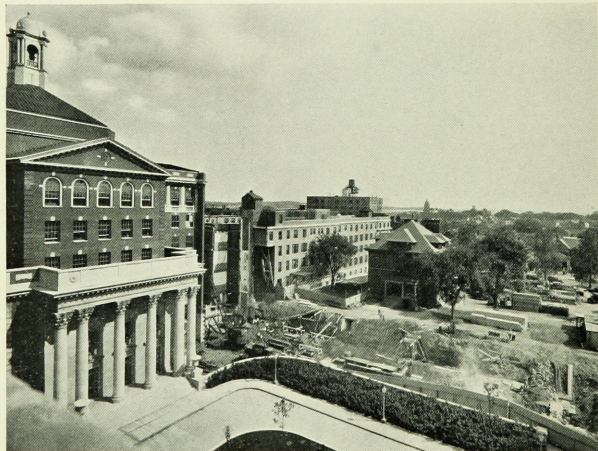




Clinic Building of the New Haven Hospital.



The Raleigh Fitkin Memorial Pavilion.



Beginning of Construction Work on the
Sarah Wey Tompkins Memorial Pavilion.



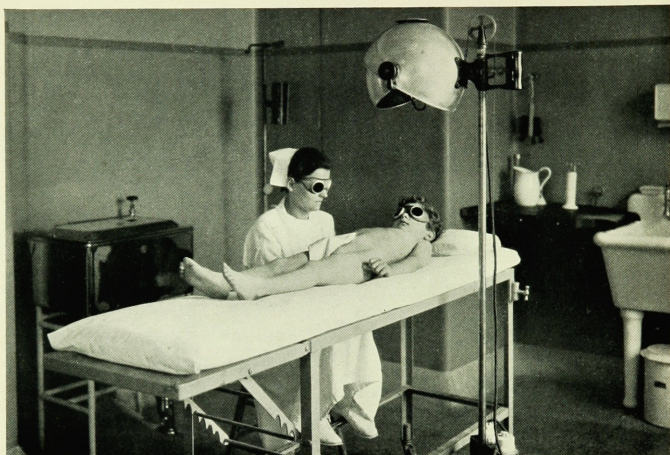
A Corner of the Main Kitchen, on the sixth floor of the Clinic Building.



Breakfast in Bed.



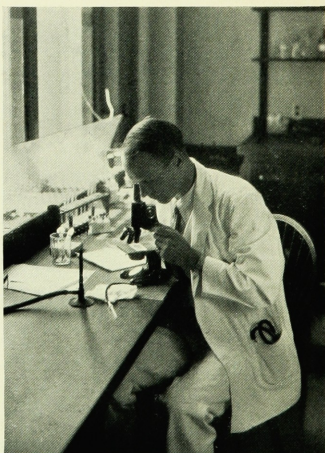
Camp Happyland Children.



In a Treatment Room of the Raleigh Fitkin Memorial Pavilion.



Where Medical Histories of Hospital Patients are Kept.



Making a Blood Count in a Hospital Laboratory.

Annual Report of the
General Hospital Society
of Connecticut
and the New Haven Dispensary
1930-1931

New Haven Connecticut

1931

SUMMARY OF SERVICES

			<i>Total Cost</i>	<i>Paid by Patients</i>	<i>Free Service</i>
New Haven Hospital					
Number of patients treated
Hospital days
			\$ 806,154	\$513,195	\$292,959
William Wirt Winchester Hospital					
Number of patients treated
Hospital days
Camp Happyland
Children admitted
Number of days
			206,450	68,626	137,824
New Haven Dispensary					
Number of treatments
			71,462	20,651	50,811
			\$1,084,066	\$602,472	\$481,594

Report of the Executive Committee

SPECIAL attention should be called to a number of facts referred to by the Superintendent in his report for the year ending June 30, 1931. First among these is the increase in the amount of service rendered by the New Haven Hospital. The number of days of care given patients far exceeds the total for any previous year. With this increase, fortunately, went a lowering of the unit cost of hospitalization. But in spite of retrenchment in expenses, and because the aggregate income from patients was less than in the previous year, a large operating deficit was incurred.

A very serious question thus presents itself. Shall persons unable to pay the nominal charge of \$3 per day in the ward, which represents less than half the actual cost of maintenance, be denied hospital care? If not, how is the cost to be met? A small group of citizens during the year indicated their belief that the community should assure adequate hospitalization for those who are sick and needy by adding to the Hospital's resources for free care. Through the efforts of this group, to be enlarged during the coming year, almost \$500,000 has already been promised as an increase to the capital funds of the Hospital. Such a response in a time of depression is highly gratifying, for it may be considered to be not only proof of a strong sense of community responsibility for sickness but also endorsement of the Hospital.

Another event of significance was the gift of \$1,100,000 made to Yale University for the erection of the Sarah Wey Tompkins Memorial Surgical Pavilion at the New Haven Hospital. More than \$11,000,000 has now been given by persons who are not residents of New Haven, for buildings used by the Hospital, and the provision of funds locally for the full utilization of the magnificent physical plant thus provided may be considered a case of *noblesse oblige*.

Attention must also be called to the committee organized by New Haven physicians for the purpose of coöperating with the Hospital administration in the conduct of the private pavilion. This is a development of major importance, and one which is in conformity with the desire of the Hospital to make itself ever more useful to the community.

Credit and appreciation are due many individuals and groups for the successful completion of the year's activities. Among these are the medical board and medical staff, administrative staff, nursing staff, directors of the General Hospital Society of Connecticut, of the New Haven Dispensary, and of the Connecticut Training School for Nurses, Board of Lady Visitors, William Wirt Winchester Hospital and Camp Association, and the Committee of Visiting Clergymen.

D. SPENCER BERGER

HARRY C. KNIGHT

FRED T. MURPHY, M.D.

FREDERICK H. WIGGIN

THOMAS W. FARNAM, *Chairman*

Report of the Superintendent

THE year 1930-1931 called upon the resources of the General Hospital Society of Connecticut, both at the New Haven Hospital and the William Wirt Winchester Hospital, to an extent never before experienced in more than one hundred years of service to the citizens of Connecticut.

The financial depression is no doubt reflected in the operating deficit of the Society, for in spite of an increase of 5,000 in the number of hospital days of care given, the income from patients was less than in the previous year, and the deficit increased 75 per cent. The coming year may be even more difficult than the last. One solution of the situation might be the hospitalization of more patients at the expense of the City of New Haven and surrounding towns. Even though municipalities pay only about half of the actual cost of hospital care, nevertheless this is more than the average patient in the ward is able himself to pay. Thus, with more hospitalization publicly provided for, the budget would more nearly balance.

Building Activities Continued

THE appended statistical summary shows that there has been a marked increase in practically every activity of the New Haven Hospital. At the same time the building program inaugurated in the previous year has been continued. The Raleigh Fitkin Memorial Pavilion, formally dedicated in February, 1930, has been open to patients for more than one year, with results highly gratifying to patients and members of the staff. The Clinic Building, begun in August, 1929, was completed during the year. The end of the year found the dietary department transferred to new quarters, probably second to none in completeness of equipment. New store rooms, new quarters for pharmacy and surgical supply rooms, and a new section devoted to housekeeping activities were also provided. With these changes in physical equipment the provision of necessary non-professional services to patients will be much easier and more economical.

The Clinic Building, designed as an out-patient department, is being used temporarily for the housing of patients until the new

surgical ward unit is completed. In the meantime, the cramped quarters of the old dispensary building will continue in use for out-patient clinics. Erection of the surgical pavilion entails razing the nurses' old building and the West ward. Moving of the kitchens into the Clinic Building, freeing the South building for housing of the maintenance group, permits elimination of the unsightly wooden buildings between the Isolation building and the Raleigh Fitkin Memorial Pavilion. The quarters in South will be adequate for present needs but permanent quarters for the maintenance units must be found.

Three Units Still Needed

WITH the completion of the surgical ward unit, which is to have a capacity of 130 beds, surgical patients and medical and pediatric patients with non-infectious diseases will be adequately housed. Among the buildings which must still be provided are a women's pavilion, a new Isolation building, and an addition to the private pavilion for patients of moderate means.

Housing for Personnel Inadequate

DURING the past few years reference has been made frequently to the need of adequate residential quarters for employees. Now, with the main entrance of the Hospital on Howard Avenue, the old frame houses opposite have become more conspicuous than ever before. Although the usual repairs have been made on these buildings, they are very unsatisfactory and better provision must be made for the personnel lodged there. Under the present arrangement it is difficult to obtain the right type of ward orderlies, porters, and maids.

High Type of Resident

THE New Haven Hospital continues to attract residents and internes of the highest type. Never before have there been so many applicants for positions on the resident staff. The character of the men who come here may be due in some measure to the high standards of medical schools generally, but it can also be credited in part to the reputation of New Haven Hospital as a teaching institution and the fact that its plant is becoming one of the best in the country.

Nursing Service Consolidated

UNIFICATION of nursing service for the entire hospital has long seemed desirable. It was only during the past year that this aim was realized, by inclusion of the private pavilion service under the general nursing administration. Although there are still some changes being considered in the private pavilion service, results obtained by Miss Effie J. Taylor, superintendent of nurses, and her associates are highly commendable. A modified form of group nursing is now in use, for several patients may, if they so desire, employ one graduate nurse. It has been found, however, that patients who desire a special nurse usually prefer to have one on full time, while those who do not care for a special nurse seem to receive reasonable satisfaction from sharing the nurse on general floor duty.

Construction work on buildings has added to the great burden of the nursing staff during the past year. Many temporary arrangements have had to be made, and during frequent movings from one section of the building to another the daily routine of the nurse must be carried on without inconvenience to the patient. The attitude of student and graduate nurses throughout this trying period of adjustment has been more than gratifying, and never has there been a more harmonious relationship between the nursing staff and medical and administrative departments.

Committee on Private Service

IN keeping with its policy of improving service to the community wherever possible, the New Haven Hospital has asked a group of physicians in private practice to act as a committee on the private pavilion. This committee, consisting of Drs. Howard S. Colwell, Lewis C. Foster, Luther K. Musselman, and Donald W. Porter, is coöperating actively with the medical board and the directors of the Hospital in working out administrative policies which will make the private pavilion of maximum usefulness to patients and physicians. ✓

Opening of Psychiatric Clinic

ON the first of March the psychiatric clinic in the Institute of Human Relations, under the direction of Dr. Eugen Kahn, was opened for the reception of patients. This clinic, furnished with

supplies from hospital stores and food from the hospital kitchens, is considered a part of the general administrative responsibility of the New Haven Hospital. Approximately 1,100 patient days of care have been given by the clinic during its first year. The patients are primarily of the type which would be responsive to study and immediate treatment, and the period of hospitalization is limited to fifteen days, except upon the recommendation or approval of the chief of the clinic. This valuable adjunct to the hospital facilities of New Haven will undoubtedly relieve the burden of many a family by providing a place for study and treatment of mental cases. Until the opening of the clinic there was no provision for mental illness except in state institutions, which are overcrowded and provide for the most part only custodial care.

Appointment to Administrative Staff

DURING the year just past the Hospital has welcomed to its administrative staff Dr. Albert Franklin Dolloff, a graduate of the University of New Hampshire and of Yale University, and for the past five years associate professor of biology at William and Mary College in Virginia.

William Wirt Winchester Hospital

THE William Wirt Winchester Hospital continues to provide hospitalization for sixty patients. The financial situation during the past year has made it impossible to make more beds available to the public, but the waiting list, which at one time was as high as thirty-five, has gradually become smaller. This is undoubtedly due to the economic condition of persons who formerly made application for hospitalization. The plant continues to serve as an acute condition hospital rather than a sanatorium. Patients for the most part have been of the type who are confined to bed for the greater part of the time. The cost of hospitalization is approximately that of the New Haven Hospital, which is to be expected since both are designed for acute cases.

The personnel of the Winchester Hospital remains the same as during the last year. The methods of treatment have not materially changed. Surgical cases have been brought to the New Haven Hospital for operations such as phrenectomy and thoracoplasty. Artificial pneumothorax has been used to a great extent by Dr.

Soper and his associates and the number of patients returning to the Hospital for refills is gradually increasing.

Winchester Hospital is serving the citizens of the immediate vicinity of New Haven in a satisfactory manner. As far as possible, admissions have been limited to patients living in New Haven County. However, many other citizens of the State have also been cared for.

Summer Camp for Children

THE work of the preventorium, which was open as usual during the months of July, August, and September, was of a high order. Miss Reed, who directed the Camp so successfully last year, returned and with her came several members of the counsellor staff who had been at the Camp before. The following figures will attest to the results which were obtained:

Children Admitted	101	Total Operating Expenses	\$11,524.00
Daily Average Number	78	Per Capita Cost per Day	1.76
Remaining Entire Season	63	Per Capita Cost—Food	.60
Total Children's Days	6,538	Gained over 10 lbs. Each	20
		Greatest Gain	17½ lbs.

Contributors to this project during the year were, in addition to the General Hospital Society of Connecticut, and the William Wirt Winchester Hospital and Camp Association, the Employees' Tuberculosis Relief Association, the Kiwanis Club of New Haven, and the City of New Haven. The City contributed to the work of the Camp for the first time. Through the representation of the Mayor, the Board of Finance appropriated the sum of \$1,500 for the salaries of counsellors.

The Camp should be expanded whenever funds are available for the purpose. It is probably one of the most worthy projects sponsored by the General Hospital Society of Connecticut, and there is a real need for the care of many more children than can now be admitted. No more children can be taken until additional sleeping quarters are provided, and these, of course, must be of fireproof construction. Genuine appreciation of the devotion and interest of the many persons who follow the work of the Camp and contributed to its support during the year must be expressed.

Mrs. Lewis H. Bronson, chairman of the executive committee of the William Wirt Winchester Hospital and Camp Association, reports that about 180 citizens of New Haven accepted the invitation to join the Association, and in a number of instances sustaining and contributing memberships were taken. The major interest of the Association is the Camp, but it also helps to relieve the monotony of the patients at the William Wirt Winchester Hospital by providing musical and other entertainments.

Board of Lady Visitors

THE Board of Lady Visitors again provided Christmas decorations and entertainment in the Hospital. Presents were provided for patients and employees, including bed stockings for the smaller patients. Singing of carols in the wards helped to create a happy holiday atmosphere. Window boxes were arranged for the wards during the year. Flowers were furnished on several occasions. The customary interest was shown in the closet of clothes for outgoing patients and in the collection of magazines, toys, games, and books. Members of the Board visited the Hospital several times a week to assist the public school teacher in reading and teaching sewing to the children.

Committee of Visiting Clergymen

TWELVE clergymen representing all the various denominations in New Haven have made up the committee during the past year. Each man was in charge of the work for one month, visiting in the wards and making special calls as requested.

Three meetings of the committee were addressed during the year by members of the Hospital and Medical School staff. A series of lectures on psychiatry, arranged especially for the committee, were given at the Institute of Human Relations under the direction of Dr. Kahn. Great interest was shown in this opportunity to learn something of modern developments in the field of psychiatry and mental hygiene.

X-ray Department

THE census of patients referred to the X-ray department during the past year compares favorably with that of the year preceding. There were 9,098 patients admitted to the department for radio-

graphic and fluoroscopic examinations, 6,654 cases from the Hospital and 2,544 from the Dispensary, an increase of 1,781, or approximately 19.5 per cent over the previous year.

A total of 781 patients applied for radiation therapy, while 564 were treated the year before. Of these patients, 376 were referred by the Dispensary, and the remainder by Hospital and outside physicians. This division shows an increase of 27.8 per cent in the work done.

During the year one clerical assistant and one additional technician have been added to the non-professional personnel. The professional personnel consists of a radiologist-in-chief, a resident radiologist, an assistant radiologist, and an interne. Twenty-four hour service is maintained by both the technical and professional staffs.

Since February of this year the department has been located in the new Clinic Building. The department is now adequately equipped with modern radiographic and radiotherapeutic apparatus, and compares favorably in efficiency and equipment with any X-ray department.

Laboratory Service

THE past year has seen no material change in the policy upon which the laboratories are operated nor has there been any striking change in the volume of work done or in its character. As in previous years the work is largely serological and the total number of examinations completed upon requisition from the Hospital and Dispensary is 12,846. In addition, the laboratory has continued to do a considerable volume of work involving examinations of many types for individual physicians and for institutions outside of New Haven.

Information Service

EVERY effort has been made in the past year to add to the comfort and convenience of patients and visitors. Telephone and information service was improved, and particular emphasis was placed upon the work of the admitting office. One of the most important functions of the Hospital is to make a stay or a visit to the institution as pleasant as possible under the circumstances. When the new Clinic Building is opened, it is hoped that a person

may be stationed in the main foyer to receive incoming patients and visitors, and to direct them to the proper stations for information and service. With limited resources the problem is by no means an easy one, but the Hospital is endeavoring in every way possible to serve applicants for admission and visitors efficiently and to make them feel at ease.

New Haven Dispensary

REFERENCE has already been made to completion of the new Clinic Building at the center of the Hospital plant, and postponement of its occupancy by the Dispensary because of its temporary use for hospitalization of ward patients while the Sarah Wey Tompkins surgical pavilion is being erected. In spite of continuing in cramped quarters, the Dispensary, like the Hospital, experienced in 1930-31 the busiest year of its existence. The census of clinics and the financial statement, which appear elsewhere in this report, speak for themselves, and become even more significant when the quality of service rendered is considered.

The number of treatments given during the year totalled 71,037, an increase of 7,953, or 13 per cent, over the service rendered in the previous year. While this reflects in part the present economic situation, it is also in part the result of steady growth. A review of recent years shows that the Dispensary is now visited by fifty per cent more patients than it was five years ago. While the number of treatments increased during the year by 13 per cent, the total operating expenses were only 8 per cent greater. The average cost per treatment fell $4\frac{1}{2}$ cents, from \$1.05 to \$1.005. Patients also paid less, the average dropping from 31 to 29 cents per treatment, which includes fees for drugs, X-rays, braces, and special treatments and materials. A fee of 25 cents per visit is charged those who can afford to pay this much, but many pay less.

Service increased in almost every clinic in the Dispensary, so that all departments felt the burden, which will be greatly lightened when the Dispensary moves into its new quarters with enlarged space, new equipment, and greater coördination of Hospital and Dispensary activities.

ALBERT W. BUCK,
Superintendent.

STATISTICAL STUDY

NEW HAVEN HOSPITAL

	1929-30	1930-31
Number of patients July 1	247	297
Admitted	6,031	6,137
Births	549	642
Total	6,827	7,076
Discharged	6,093	6,418
Died	437	364
Remaining June 30	297	294
Emergency cases, not included above	3,510	5,179
Whole number treated	10,337	12,255
Largest number patients any one day	351	369
Smallest number patients any one day	208	236
Daily average patients:		
Semi-private, Main Hospital	21.6	21.2
Private Isolation, Main Hospital	5.3	2.1
Private, Private Pavilion	46.6	44.4
Semi-private, Private Pavilion	1.7	4.2
Wards	166.4	182.3
Wards Isolation	40.4	42.4
Daily average all patients	282.	296.
Daily average guests and boarders.1	.12
Daily average nurses	296.2	312.9
Average number of days per patient	15.08	15.27
Hospital days patients:		
Main Hospital	85,222	90,280
Private Pavilion	17,744	17,768
Hospital days all patients	102,966	108,048
Hospital days nurses.	108,136	114,244
Cost of food per person:		
Main Hospital445	.412
Private Pavilion	1.25	1.05
Weekly maintenance per person:		
Main Hospital	50.12	49.42
Private Pavilion	68.46	66.50
X-ray (Hospital only)	5,403	6,554
Operations:		
Main Hospital	2,009	2,148
Private Pavilion	1,292	1,210

ADMISSIONS WITH SERVICE SHOWN NEW HAVEN HOSPITAL

	1930	1931
Surgical	1904	1850
Medical	830	984
Pediatric	275	290
Medical contagious	370	411
Pediatric contagious	306	250
Gynecological	442	426
Obstetrical	623	694
Births	549	642
Laryngitic	1118	967
Ophthalmology	163	213
Psychiatric	0	52
TOTAL all departments	6580	6779

DISTRIBUTION OF PATIENTS BY TOWNS NEW HAVEN HOSPITAL

Ansonia	127	Litchfield	5	Roxbury	1
Bethany	13	Lyme	6	Saybrook	14
Branford	141	Madison	30	Seymour	37
Bridgeport	71	Manchester	3	Shelton	33
Bristol	8	Meriden	58	Southington	17
Canaan	2	Middletown	17	Stamford	17
Cheshire	42	Milford	75	Stratford	7
Clinton	21	Mt. Carmel	8	Torrington	13
Clintonville	6	Mystic	3	Union City	1
Danbury	20	Naugatuck	25	Wallingford	210
Darien	3	New Britain	17	Washington	21
Deep River	6	New Haven	4037	Waterbury	65
Derby	36	New London	15	Watertown	8
Devon	11	New Milford	7	Westbrook	22
Durham	4	Newton	1	West Haven	502
East Haven	128	Niantic	1	Westport	4
Fairfield	4	North Branford	4	Willimantic	2
Glastonbury	3	Northford	6	Windsor	1
Greenwich	5	North Haven	51	Winsted	2
Groton	4	Norwalk	9	Woodbridge	23
Guilford	53	Norwich	32	Woodbury	4
Hamden	380	Orange	31	Woodmont	8
Hartford	34	Plainville	1	Yalesville	7
Ivoryton	1	Plantsville	1	Outside of Conn.	190
Jewett City	2	Ridgefield	2		
					6779

CENSUS OF CLINICS

NEW HAVEN DISPENSARY

	1926-27	1927-28	1928-29	1929-30	1930-31
Medical	3929	4658	4227	5241	6971
Surgical	8756	9732	8636	10103	10337
Pediatric	5508	6381	5983	6291	7441
Women's	2983	2707	2661	2937	3465
Eye	5490	5565	5746	5393	6009
Throat	2943	2714	2871	3064	3465
Skin	1453	1512	1691	2054	2365
Orthopedic	2519	1635	2569	2390	2254
Nerve	219	240	292	355	436
Tuberculosis	2174	2521	2533	2705	2777
Urology	1535	1580	1718	2555	2563
Special Medicine	3816	3949	3402	3221	3518
Dental	1474	1589	2032	2636	3104
X-ray	2380	2547	2138	2063	2233
Mental Hygiene	830	1034	90	0	0
Psychology	45	40	49	32	0
Allergy	1282	1345	1454	1687	1611
Endocrine	45	0	0	0	0
Cardiac	451	603	529	549	511
Metabolism	943	424	478	712	1038
Metabolism-Hospital	0	620	570	505	589
Muscle Training	545	1051	1426	849	771
Heliotherapy	468	270	16	0	13
Physiotherapy	1353	2463	2821	3632	4367
Physiotherapy-Hospital	0	0	0	1318	2038
Third Pediatric	1125	1186	1050	921	981
Foot Clinic	292	413	0	0	0
Pediatric Heart	319	370	361	413	482
Fracture	241	392	0	0	0
Pediatric Special Medicine	1071	800	561	515	508
Neuro-Psychiatric	0	0	861	943	921
Rheumatic Heart	0	0	0	0	51
Accident Room-Hospital	0	0	0	0	308
TOTAL	54,189	58,341	56,765	63,084	71,037
Professional Visits	0	319	249	233	194

STATISTICAL STUDY WILLIAM WIRT WINCHESTER HOSPITAL

	1929-30	1930-31
Number patients remaining July 1	59	60
Admitted	115	142
Discharged	97	119
Died	17	22
Remaining June 30	60	61
Emergency cases not included		
Whole number treated	174	202
Largest number patients any one day	61	62
Smallest number patients any one day	56	54
Daily average patients:		
Private rooms	.91	.89
Semi-private rooms	10.99	10.55
Self-pay, Wards	43.27	42.50
Board of Charities, Wards	.47	
Board of Health, Wards	3.63	5.33
Other cities and towns	.07	.54
Daily average all patients	59.34	59.81
Daily average nurses	21	
Average number days per patient	124.48	108.07
Hospital days patients:		
Private rooms	332	325
Semi-private rooms	4,014	3,850
Self-pay, Wards	15,792	15,511
Board of Charities, Wards	171	
Board of Health, Wards	1,324	1,946
Other cities and towns	26	199
Total hospital days patients	21,659	21,831
Cost of food per person	\$.74	
Weekly maintenance per patient	\$56.98	

DISTRIBUTION BY TOWNS WILLIAM WIRT WINCHESTER HOSPITAL

Ansonia	2	Madison	1	Stamford	11
Bethel	1	Meriden	2	Stratford	4
Branford	3	Milford	3	Thomaston	1
Bridgeport	6	New Britain	1	Torrington	1
Bristol	2	New Haven	57	Wallingford	1
Cos Cob	1	Norwalk	1	Waterbury	3
Derby	1	Norwich	1	West Hartford	2
East Norwalk	1	Putnam	1	West Haven	11
Glastonbury	1	Seymour	1	Westport	1
Hamden	11	Sharon	1	Windsor	1
Hartford	1	Shelton	2	Haverhill, Mass.	1
Litchfield	1	South Norwalk	3		

NURSING PERSONNEL

Superintendent of Nurses	1	
Assistant Superintendent of Nurses	2	3
<hr/>		
Supervisors and Assistants (day)		
Medical Department	1	
Surgical Department	2	
Isolation Department	2	
Obstetrical Department	1	
Operating Room	2	
Administrative (including one personnel administrative assistant)	2	10
<hr/>		
Supervisors and Assistants (night)		
Main Hospital	3	
Isolation Pavilion	1	
Accident Room (Head Nurse)	1	5
<hr/>		
Head Nurses and Assistants (day)		20
The student body includes:		
Students in Yale School of Nursing Class 1932	31	
Students in Yale School of Nursing Class 1933	39	
Students in Affiliation with Yale School of Nursing	76	146
<hr/>		
Graduate Nurses on general floor duty	45	45
Graduate Nurses in charge of Graduate and Student Nurses' health	2	2
<hr/>		
Total number of nurses on Nursing Staff		231
Average number patients for month of June in general hospital		245.9
<i>Private Pavilion:</i>		
Assistant Superintendent of Nurses in charge of department	1	
Supervisor	1	
Night Supervisor	1	
Assistant Night Supervisor	1	
Head Nurses	4	8
<hr/>		
Graduate Nurses on General Duty	20	20
<hr/>		
Total number of nurses on Private Pavilion Nursing Staff		28
Average number of patients for June in Private Pavilion		45.5
<i>New Haven Hospital Dispensary:</i>		
Assistant Superintendent of Nurses in charge of department	1	
Clinic Head Nurses and Graduate Assistants	11	12
<hr/>		
Total number of nurses on Dispensary Nursing Staff		12
Number cases treated in Dispensary during month of June		6,627
Total number of nurses, Graduate and Student on Nursing Service		271

General Hospital Society of Connecticut

Officers 1931-1932

James T. Moran, *President*
Frederick H. Wiggin, *Vice-President*
Milton C. Winternitz, M.D., *Secretary*
The Union & New Haven Trust Co., *Treasurer*

Directors whose terms of office expire, respectively in

1932	1933	1934
F. M. Adler	George Berger	Winchester Bennett
D. Spencer Berger	Henry F. English	George Blumer, M.D.
Clarence Blakeslee	Henry W. Farnam	Lewis H. Bronson
George Parmly Day	Thomas W. Farnam	Mrs. E. G. Buckland
George S. Hawley	Gourdin Y. Gaillard	Harry C. Knight
Fred T. Murphy, M.D.	Henry L. Galpin	John J. McKeon
L. C. Sanford, M.D.	Frederick D. Grave	James T. Moran
Louis E. Stoddard	James C. Greenway, M.D.	Murray Sargent
Frederick H. Wiggin	Thomas Hooker	W. F. Verdi, M.D.
M. C. Winternitz, M.D.	Edwin P. Root	Isaac Wolfe

Finance Committee

Thomas W. Farnam Henry L. Galpin Gourdin Y. Gaillard

Executive Committee

Thomas W. Farnam, *Chairman*
D. Spencer Berger Harry C. Knight Fred T. Murphy, M.D. Frederick H. Wiggin

Superintendent

Albert W. Buck

Assistant Superintendents

Robert Jordan
Albert F. Dolloff

Assistants to the Superintendent

Helen B. Bray Jennie B. McCutcheon Catherine F. McGovern

Purchasing Agent

J. Hasbrouck Wallace

Accountant

Augustus R. Haury

Chief Engineer

Clifford H. Leighton

Housekeeper

Cora B. Kellogg

Auditors

Messrs. Lybrand, Ross Bros. & Montgomery.

MEMBERS OF THE SOCIETY

Corporators

*Thomas Hubbard, M.D.	*J. S. Peters, M.D.
*Eli Ives, M.D.	*Benjamin Silliman, M.D.
*Jonathan Knight, M.D.	*John Skinner, M.D.
*William Leffingwell, Esq.	*Nathan Smith, M.D.
*Thomas Minor, M.D.	*Eli Todd, M.D.

Presidents

*William Leffingwell, Esq.	1827-1832
*Hon. Simeon Baldwin	1832-1833
*Nathan Peck, Esq.	1833-1841
*Hon. W. W. Boardman	1841-1842
*Jonathan W. Knight, M.D.	1842-1865
*Hon. W. W. Boardman	1865-1871
*E. H. Bishop, M.D.	1872-1880
*Hon. Francis Wayland	1880-1884
*Hon. James E. English	1884-1887
*Hon. Samuel E. Merwin	1887-1901
*Hon. Eli Whitney	1901-1918
*William H. Carmalt, M.D.	1918-1921
Henry W. Farnam, Esq.	1921-1927
James T. Moran, Esq.	1927-

Vice-Presidents

*John S. Peters, M.D.	1827-1831
*Hon. Simeon Baldwin	1831-1832
*Thomas Hubbard, M.D.	1832-1839
*Hon. W. W. Boardman	1839-1841
*Jonathan W. Knight, M.D.	1841-1842
*Hon. Dennis Kimberly	1842-1863
*E. H. Bishop, M.D.	1863-1866
*Hon. Henry Peck	1866-1867
*E. H. Bishop, M.D.	1867-1872
*Hon. William Fitch	1872-1877
*Hon. James E. English	1877-1884
*Morris F. Tyler	1884-1908
*Hon. Simeon E. Baldwin	1908-1923
*William H. Carmalt, M.D.	1923-1929
Frederick H. Wiggin	1930-

Treasurers

*John Skinner, M.D.	1827-1832
*Amos Townsend	1832-1864
*Alexander McAllister	1864-1865
*J. A. Bishop	1865-1877
*Wilbur F. Day	1877-1879
*Leonard S. Hotchkiss	1879-1889
*William T. Bartlett	1889-1895

*Deceased

Charles E. Curtis	1895-1909
*Warren A. Spalding	1909-1911
Union & New Haven Trust Co.	1911-

Secretaries

*Charles Hooker, M.D.	1827-1830
*N. Beers Ives, M.D.	1830-1835
*Virgil M. Dow, M.D.	1835-1840
*E. H. Bishop, M.D.	1840-1844
*P. A. Jewett, M.D.	1844-1864
*S. G. Hubbard, M.D.	1864-1865
*C. A. Lindsley, M.D.	1865-1879
*F. L. Dibble, M.D.	1879-1880
*T. H. Bishop, M.D.	1880-1906
*W. G. Daggett, M.D.	1906-1910
H. W. Ring, M.D.	1910-1921
M. C. Winternitz, M.D.	1921-

Vice-Presidents and Directors for Life†

Mrs. F. T. Bradley	Mrs. Abner Hendee
Frederick F. Brewster	Charles S. Leavenworth
Mrs. John S. Ely	Victor M. Tyler
Henry F. English	Mrs. Victor M. Tyler
Prof. Henry W. Farnam	Mrs. W. O. Whitcomb

Vice-Presidents for Life

Mrs. Vincent Ardenghi	Miss Elizabeth R. Hooker
Miss A. Hope Bennett	Miss Marie O. Hotchkiss
Mr. and Mrs. Hiram Bingham	Walter E. Malley
Mrs. Frederick F. Brewster	John T. Manson
Mrs. Nathan S. Bronson	Mrs. Alfred Mitchell
Miss Caroline E. Dudley	Phelps Montgomery
Mrs. Henry F. English	James T. Moran
Lewis H. English	S. Z. Poli
Mrs. Franklin Farrel, Sr.	Louis M. Sagal
Mr. and Mrs. Franklin Farrel, Jr.	Mrs. Henry B. Sargent
Bruce Fenn	Mrs. Simon B. Shoninger
Isidor Freedman	Mrs. E. G. Stoddard
Mr. and Mrs. Henry L. Galpin	Mr. and Mrs. Louis E. Stoddard
James A. Hamilton	Rev. Anson Phelps Stokes
Mrs. Katharine F. Harvey	Hayes Q. Trowbridge
Clarence R. Hooker	Mrs. Rutherford Trowbridge

Mrs. Stephen Whitney

**Deceased*

†Previous to the amendment of the constitution of The General Hospital Society in 1919, persons contributing at any one time \$1,000 became vice-presidents for life; contributors of \$500, life directors; contributors of \$50, life members; and contributors of \$25, members for ten years. The Act of March 20, 1919, omitted the class of life directors and provided that contributors of \$500 should be life members; of \$25, annual members. Those enumerated in the list as life directors are, therefore, those who qualified before the amendment of 1919.

Life Directors

Dr. Louis B. Bishop
Miss Elizabeth W. Farnam

Henry Farnam
Thomas W. Farnam
Tracy Farnam

Life Members

William L. Andrews
Prof. Roswell P. Angier
Charles S. Baldwin
Amos F. Barnes
Arthur S. Barnes
Winchester Bennett
Mrs. F. D. Berrien
Charles F. Bliss
Miss Jane C. Bronson
Dr. Margaret L. Bronson
Theodore L. Bronson
LeGrand Cannon
Charles E. Curtis
Miss Maria Trumbull Dana
Julius G. Day
Mrs. F. B. Dexter
John I. H. Downes
George F. Eaton
Dr. Louise W. Farnam

Dr. and Mrs. Joseph M. Flint
Mrs. George S. Hastings
Mrs. Samuel Hemingway
Mr. and Mrs. Thomas Hooker
H. Stuart Hotchkiss
Mr. and Mrs. John Day Jackson
Harris Lapides
Lyman T. Law
Burton Mansfield
Mrs. S. C. Morehouse
Henry F. Parmelee
Dr. Henry W. Ring
Dr. and Mrs. Leonard C. Sanford
John H. Taylor
Mrs. John Phelps Taylor
Dr. and Mrs. R. Townshend
Henry Hotchkiss Townshend
Cortlandt Trowbridge
Roger W. Tuttle
Prof. Percy T. Walden

New Haven Dispensary

Officers 1931-1932

Frederick M. Adler, *President*
James T. Moran, *Vice-President*
Frederick N. Sperry, M.D., *Secretary*
The Union and New Haven Trust Company, *Treasurer*

Directors whose terms of office expire, respectively in

1932	1933	1934
Arthur N. Alling, M.D. ✓	Thomas Hooker ✓	Frederick M. Adler ✓
D. Spencer Berger ✓	James T. Moran ✓	George Blumer, M.D. ✓
Thomas W. Farnam ✓	Henry H. Townshend ✓	Henry F. English ✓
George Dudley Seymour ✓	Frederick N. Sperry, M.D. ✓	Murray Sargent ✓
Frederick H. Wiggin ✓		James E. Wheeler ✓

Finance Committee

Frederick M. Adler, *Chairman* Thomas W. Farnam

Superintendent

Albert W. Buck

Assistant to the Superintendent

Catherine F. McGovern

Connecticut Training School for Nurses

Officers 1931-1932

President

✓ James T. Moran

Vice-Presidents

✓ Mrs. Edwy L. Taylor

✓ Mrs. Winchester Bennett

Treasurer

✓ Henry L. Galpin —

Secretary

✓ Mrs. Lewis H. Bronson

Assistant Secretary

✓ Mrs. Frank L. Bigelow

Auditors

Lybrand, Ross Bros. & Montgomery

Executive Committee

✓ Mrs. George P. Baker

✓ Mrs. Winchester Bennett

✓ Mrs. Frank L. Bigelow

✓ Mrs. Edward Bradley

✓ Mrs. Frederick T. Bradley

✓ Mrs. Lewis H. Bronson

✓ Mrs. Edward G. Buckland

✓ Mrs. Henry A. Bumstead

✓ Mrs. W. Henry Fairchild

✓ Mrs. Arnold Gesell

✓ Miss Annie W. Goodrich

✓ Mrs. B. Britton Götsberger

✓ Mrs. James Greenway

✓ Mrs. H. Stuart Hotchkiss

✓ Mrs. Harry B. Jepson

✓ Mrs. Frederick L. Pease

✓ Mrs. Leonard C. Sanford

✓ Mrs. Edwy L. Taylor

✓ Miss Effie J. Taylor

✓ Miss Emily Whitney

✓ Albert W. Buck, Ph.D.

✓ George P. Day

✓ Prof. Henry W. Farnam

✓ Thomas W. Farnam

✓ James T. Moran

✓ Dr. Fred T. Murphy

✓ Dr. Milton C. Winternitz

SUB-COMMITTEES

Nominating Committee

Mrs. Arnold Gesell

Mrs. Lewis H. Bronson

Committee on Entertainments

Mrs. Leonard C. Sanford

Mrs. George P. Baker

Mrs. H. Stuart Hotchkiss

Mrs. Arnold Gesell

Mrs. Frederick L. Pease

Committee on Nurses' Home

Mrs. James Greenway

*General Hospital Society of Connecticut**Committee on University Extension Courses*

Mrs. Henry A. Bumstead
Mrs. Winchester Bennett

Mrs. Edwy L. Taylor
Miss Annie W. Goodrich

Committee on Publicity

Miss Emily Whitney, *Chairman*
Mrs. Arnold Gesell

Mrs. George P. Baker
Mrs. Frederick L. Pease

Committee on Hospitality

Mrs. Edward Bradley
Mrs. B. Britton Gottsberger

Mrs. Harry B. Jepson
Miss Effie J. Taylor

Library Committee

Mrs. Frank L. Bigelow

Mrs. B. Britton Gottsberger

Finance, Loan and Missionary Committee

Mrs. Edwy L. Taylor
Mrs. Frank L. Bigelow

Mrs. Winchester Bennett
Miss Effie J. Taylor

Board of Lady Visitors

Mrs. E. G. Buckland, *Chairman*
Mrs. Lewis Bronson, *Secretary*
Mrs. Edward Man, *Treasurer*

Mrs. Frederick M. Adler
Mrs. James T. Babb
Mrs. D. Spencer Berger
Mrs. Nathan S. Bronson
Mrs. Ralph Cheney
Mrs. Charles B. Doolittle
Mrs. R. B. Gerard

Mrs. Samuel C. Harvey
Mrs. Herman Hessler
Mrs. Albert J. Johnson
Miss Helen Moran
Mrs. William A. Rutz
Mrs. Lawton Sargent
Mrs. W. B. Snow

Mrs. Theodore R. Sucher

William Wirt Winchester Hospital and Camp Association

Mrs. A. E. Alling
Mrs. V. W. Bates
Mrs. G. W. Berger
Mrs. D. S. Berger
Mrs. Carl Bettcher
Mrs. Charles Brennan
Mrs. L. H. Bronson
Mrs. John Desmond
Mrs. E. J. Duggan
Mrs. Frank Frisbie
Mrs. A. C. Gilbert
Mrs. L. L. Higgins
Mrs. Wilbur Hoye
Mrs. John Kirby
Mrs. H. C. Knight
Mrs. I. S. Levy

Mrs. J. J. McKeon
Mrs. G. W. Miller
Miss Helen Moran
Mrs. A. G. Nadler
Mrs. Fred Page
Mrs. A. H. Powell
Mrs. L. Schoenberger
Mrs. E. B. Seeley
Mrs. William R. Shaffer
Mrs. R. Steinert
Mrs. J. B. Tower
Miss Loretta B. Verdi
Mrs. Ralph Walker
Mrs. Fred Wetzler
Mrs. R. H. Whitehead
Mrs. S. T. Willis

Committee of Visiting Clergymen

Rev. Harold Camp
Rev. William E. Sprenger
Rev. Howard R. Weir, *Chairman*
Rev. Franklin J. Kennedy
Rev. Theodore Fischer
Rev. Behrend Mehrtens

Medical Staff 1931-32

NEW HAVEN HOSPITAL AND NEW HAVEN DISPENSARY AFFILIATED WITH THE YALE UNIVERSITY SCHOOL OF MEDICINE

MEDICAL BOARD

Francis G. Blake
Samuel C. Harvey
Eugen Kahn

Arthur H. Morse
Grover F. Powers
Milton C. Winternitz
Albert W. Buck

CONSULTING STAFF

George Blumer (Medicine)
John E. Lane (Dermatology)
Joseph I. Linde (Pediatrics)
Richard F. Rand (Obstetrics and
Gynecology)

Arthur H. Ruggles (Psychiatry)
Henry L. Swain (Laryngology)
William F. Verdi (Surgery)
Charles-Edward A. Winslow (Hygiene)

ADVISORY MEDICAL BOARD, PRIVATE PAVILION

Howard S. Colwell (Medicine)
Lewis C. Foster (Surgery)

Luther Musselman (Obstetrics and Gynecology)
Donald W. Porter (Pediatrics)

STAFF

INTERNAL MEDICINE

Physician-in-Chief

Francis G. Blake

Associate Physicians

A. Bliss Dayton
Louis M. D'Esopo
David M. Kydd
John R. Paul

John P. Peters
Allan K. Poole
Willard B. Soper (Tuberculosis)
Albert J. Sullivan

Attending Physicians

Harold S. Arnold
Howard S. Colwell
James C. Fox, Jr. (Neurology)

Harold M. Marvin
Alfred G. Nadler (Dermatology)
Wilder Tileston

Assistant Attending Physicians

Marcus Backer
John H. Bumstead
Charles W. Comfort
Benedict R. Harris
Arthur H. Jackson
Harry E. Klebanoff

Percy A. Leddy
Ralph E. McDonnell (Dermatology)
Louis H. Nahum
Orville F. Rogers
Bernard A. Rogowski
Arthur R. Weed (Dermatology)

Resident Staff

Walls W. Bunnell, Resident
Abel A. Applebaum, Assistant Resident
Sven M. Gunderson, Assistant Resident
F. Sullivan Hassett, Assistant Resident
Paul H. Lavietes, Assistant Resident

PEDIATRICS

Pediatrician-in-Chief

Grover F. Powers

Associate Pediatricians

Margaret L. Bronson	James D. Trask
Charles S. Culotta	Charles L. Wood
Daniel C. Darrow	Herman Yannet

Attending Pediatricians

Ethel C. Dunham	Arnold Gesell
	Donald W. Porter

Assistant Attending Pediatricians

Martha M. Eliot	William C. McGuire
Morris Goldstein	Susan P. Souther
Elizabeth R. Harrison	Edward T. Wakeman
Maurice M. Hillman	Joseph Weiner
Amy L. Hunter	William R. Wilson

Resident Staff

Paul F. McAllenney, Jr., Resident
James P. Hanner, Assistant Resident
Harry Gordon, Assistant Resident

PSYCHIATRY AND MENTAL HYGIENE

Psychiatrist-in-Chief

Eugen Kahn

Associate Psychiatrists

Edgar VanN. Emery	Edwin F. Gildea
Clements C. Fry	Marian C. Putnam
Lloyd J. Thompson	(in Charge of Clinic)

Assistant Attending Psychiatrists

Everett S. Rademacher	Ernest F. Russell
-----------------------	-------------------

Resident Staff

William F. Roth, Jr., Assistant Resident

SURGERY

Surgeon-in-Chief

Samuel C. Harvey

Associate Surgeons

Bert G. Anderson (Dental Surgery)
William J. German
Denis S. O'Connor (Orthopedics)
Ashley W. Oughterson
Winthrop M. Phelps (Orthopedist-in-Chief)
Vincent Vermooten (Urology)

Attending Surgeons

Arthur N. Alling (Ophthalmologist-in-Chief)
Eugene M. Blake (Ophthalmology)
Elwyn R. Bryant (Dentist-in-Chief)
Clyde L. Deming (Urologist-in-Chief)
Charles T. Flynn (Laryngology, Chief-of-Clinic)
Lewis C. Foster
Willis E. Hartshorn (Chief-of-Clinic)
Merrill K. Lindsay (Orthopedics)
Leonard C. Sanford
Frederick N. Sperry (Oto-Laryngologist-in-Chief)
Arthur M. Yudkin (Ophthalmology, Chief-of-Clinic)

Assistant Attending Surgeons

Louis Angell (Dentistry)
Creighton Barker (Oto-Laryngology)
Harry L. Berman (Oto-Laryngology)
Charles Y. Bidgood (Urology)
James J. Carney (Dentistry)
James F. Cobey (Oto-Laryngology)
Joseph M. Creegan (Dentistry)
Joseph J. Dickstein (Dentistry)
William A. Duffy (Dentistry)
William C. Duffy
Carl J. Gade (Orthopedics)
Jewell M. Gompertz (Dentistry)
Julius M. Harrison (Dentistry)
James A. Harten (Oto-Laryngology)
Ralph H. Jenkins (Urology)
Simon B. Kleiner (Proctology)
Maxwell Lear
Herman C. Little (Ophthalmology)
Paul B. MacCready
William D. Nesbit, Jr. (Dentistry)
Chris H. Neuswanger (Urology)
William H. J. O'Brien (Ophthalmology)
Frank L. Phillips (Rhinoiology)

James P. Pigott (Dentistry)
Samuel H. Pinn (Dentistry)
Frederick W. Roberts
Abraham Rosoff (Dentistry, Chief-of-Clinic)
Jacob Sharp (Dentistry)
William L. Sheahan (Ophthalmology)
Samuel J. Silverberg (Oto-Laryngology)
Franklin R. Swift (Dentistry)
Raynham Townshend
Herman R. White (Oto-Laryngology)
Leonard C. Whiting (Ophthalmology)
E. Reed Whittemore
Harold B. Woodward (Ophthalmology)

OBSTETRICS AND GYNECOLOGY

Obstetrician and Gynecologist-in-Chief

Arthur H. Morse

Associate Obstetrician and Gynecologist

Herbert Thoms

Attending Obstetricians and Gynecologists

A. Nowell Creadick

Luther Musselman

Robert M. Lewis

Assistant Attending Obstetricians and Gynecologists

Thomas V. Hynes

Margaret Tyler

Emerson L. Stone

Resident Staff for Surgery and Obstetrics and Gynecology

Carl E. Johnson, Resident Surgeon

Felix F. Tomaino, Resident Obstetrician and Gynecologist

Charles M. Boucek, Assistant Resident

Louis N. Claiborn, Assistant Resident

Gustaf E. Lindskog, Assistant Resident

Meriwell T. Shelton, Assistant Resident

Philip W. Skinner, Assistant Resident

M. Dawson Tyson, Assistant Resident

Anesthetist-in-Chief

Alice M. Hunt

RADIOLOGY

Radiologist-in-Chief

William A. LaField

Assistant Attending Radiologists

R. Harold Lockhart

Clifton R. Scott

*General Hospital Society of Connecticut**Resident Staff*

F. Erwin Tracy, Resident
Howard M. Walker, Assistant Resident

PATHOLOGY

Pathologists

Raymond Hussey

Milton C. Winternitz

Associate Pathologists

Harry M. Zimmerman

Resident Staff

Robert Tennant, Jr., Resident

BACTERIOLOGY

Bacteriologist

George H. Smith

INTERNES

Hospital Staff

Carl H. Wies
Charles H. Breck
Edward E. Terrell
David Kalkstein
Eleanor B. Gutman
Winfield L. Butsch
Arthur J. Geiger
Arthur R. Bowles
James W. Reed
A. Allison Wills, Jr.
Joseph D'Esopo
Marion E. Howard
Edward J. Manwell
Carey Bringle
John C. Mendillo
John R. Cobb
Alexander L. Bassin
George L. Nicoll
Thomas C. Jaleski
Robert Bogniard

Edward H. Stimpson
Clarence H. Cole
Charles Thuss
Orvan W. Hess
Max Taffel
M. H. Barnes
Anne L. Lawton
Paul Harper
Harold Harrison
Charles E. Tribble
Lloyd W. Minor
Ernest F. Gordon
Martin L. Stein
Vernon P. Williams
Louis H. Cohen
George C. Glass
Michael D'Amico
Henry Lee
John C. Sharp
Dorothy Loomis

WILLIAM WIRT WINCHESTER HOSPITAL

Medical Director

Willard B. Soper

Resident Physician

Julius L. Wilson

Assistant Resident Physician

John K. Deegan

Superintendent

Albert W. Buck

Superintendent of Nurses

Helen R. Brown

Assistant Superintendent of Nurses

Helen C. Fogarty

Housekeeper

Annie Lane

Nursing Staff

NEW HAVEN HOSPITAL

1930-1931

Superintendent

Effie J. Taylor

Assistant Superintendents

Elizabeth Melby
Margaret A. Tracy

Augusta Patton
Helen Bray

Supervisors and Assistants

Medicine

Margaret Schubert

Surgery

Priscilla Humphrey
Caroline Keller

Operating Room

Marguerite Robb

Communicable Diseases

Dorothy Hull
Elinor Moyle

Obstetrics

Marian Wenrich

Administration

Jean Barrett
Margaret Luskay
Evelyn Coolidge

Night Supervisor

Clara M. Brown

Assistant Night Supervisors

Teresa Dennehy

Grace Lyman

Antoinette Daniels

Head Nurses and Assistants

Medicine

Hazel R. Scott
Myrtle Swanson

Charlotte E. VanCleve
Kathryn T. Park

Surgery

Constance Kirkpatrick
Ruth Wetmore

Esther Budd
Edith VanderWerker
Electa Gallup

Pediatrics

Florence T. Pierpont
Mima Kydd

Marion Wolcott
M. Margaret Howarth

Obstetrics

Mary Morton

Olive P. Hahn

Accident Room

Barbara Austin

PRIVATE PAVILION

Superintendent

Effie J. Taylor

Supervisor

Helen Bray

Assistant Supervisor

Kathleen Young

Night Supervisor and Assistant

Helen Tappert

Louise Sharpe

Operating Room Supervisor

Marion Vaughan

Head Nurses

Annie Hibbert

Margaret Cotter

Juliet Corey

NEW HAVEN DISPENSARY

Superintendent

Effie J. Taylor

Supervisor

Augusta Patton

Head Nurses

Pediatric Clinic

Hazel Bowles

Lucy Shaw

Medical Clinic

Ruth Lyman

Elizabeth H. Simmons

Tuberculosis Clinic

Ida S. Lotspeich

Emily Johnson

Surgical Clinic

Dorothy Alling

Helen Wersebe

Obstetrics and Gynecology Clinic

Eleanor Tilton

Isabel Howe

Eye, Ear, Nose and Throat Clinic

Mildred Shelton

The General Hospital Society of Connecticut

BALANCE SHEET, JUNE 30, 1931

CAPITAL ASSETS

Fund investments:

Securities at cost			\$4,101,059.59
Restricted principal cash on special deposit with Treasurer, Union & N. H. Trust Co.			7,416.73
Due from general funds (per contra):			
Demand notes to provide working capital	\$85,000.00		
Advanced for purchase of new equipment	2,529.92		
Fund incomes accruing to fund capital	884.77		
		88,414.69	\$4,196,891.01

Plant:

New Haven Hospital:

Land		295,131.84
Buildings		1,409,037.44
Equipment		286,820.27
		<hr/> 1,990,989.55

William Wirt Winchester Memorial Hospital:

Land		247,423.40
Buildings		666,160.47
Equipment		122,843.29
		<hr/> 1,036,427.16
		<hr/> 3,027,416.71

Brady Memorial Laboratory (per contra)

\$7,224,307.72
\$ 137,222.54

CAPITAL LIABILITIES AND FUND CAPITAL

Fund capital:		
Francis Bacon	.	\$ 5,011.32
Lucy H. Boardman	.	64,818.29
Dr. William Bradley	.	5,000.00
Charles F. Brooker	.	49,190.83
Frederick L. Dibble	.	250.15
Annie R. Winchester Dye	.	16,789.64
Edwin Foote Memorial	.	152,471.43
Ellsworth I. Foote	.	16,955.94
Ellen M. Gifford	.	50,885.69
Ellen M. Gifford's Executors	.	240,999.18
Justus S. Hotchkiss	.	50,011.34
Samuel E. Merwin	.	701.96
Henry C. White	.	7,727.80
Emily M. Fitch	.	203,708.27
Rose Porter, special fund for Kindergarten	.	5,000.00
Compensation	.	6,846.18
For care of sick nurses	.	5,024.58
Free beds	.	610,502.83
Unrestricted endowment	.	140,794.80
Sarah L. Winchester	.	\$ 515,443.76
Sarah L. Winchester Legacy under Will	.	477,564.44
William Wirt Winchester	.	1,147,065.97
Reserve for loss on investments		2,140,074.17
First mortgage 5 pct. bonds, due 1944		3,772,764.40
Subscribed, not paid for	.	424,126.61
Unsubscribed	.	1,000,000.00
		197,000.00
		267,000.00
		\$ 536,000.00
		\$4,196,891.01

CAPITAL LIABILITIES AND FUND CAPITAL (Continued)

Plant capital:

Invested in land, buildings and equipment	\$1,240,569.88	
Invested in equipment and additional construction donated by Yale University	214,419.67	
Invested in William Wirt Winchester Memorial Hospital	1,036,427.16	\$2,491,416.71
		<hr/>
Brady Memorial Laboratory (contingent liability for payment, at appraised valuation)		\$7,224,307.72
		\$ 137,222.54

CURRENT LIABILITIES AND WORKING CAPITAL

Accounts payable and accrued liabilities					\$ 939.29
Patients' money (per contra)					344.59
Demand notes payable, Yale University					5,918.60
Due to capital funds (per contra above):					
Demand notes to provide working capital				\$85,000.00	
Borrowed to purchase new equipment				2,529.92	
Fund incomes accruing to fund capital				884.77	
					88,414.69
Accrued interest on first mortgage bonds					6,700.00
Deferred credits to operations:					
Winchester Hospital, Children's Division					2,195.74
					104,512.91
Current balance:					
Balance, July 1, 1930				13,376.95	
Add, Reimbursement for operating deficit, year ended June 30, 1930:					
From Yale University				\$23,059.08	
From Winchester Funds				10,546.68	
Add, Payment on account for operations of current year, from Yale University				40,000.00	
				86,982.71	
Deduct, operating deficit, year ended June 30, 1931:					
New Haven Hospital				58,126.68	
Winchester Hospital				9,484.52	
				67,611.20	
				19,371.51	\$ 123,884.42
					\$7,485,414.68

Summary of Expenses and Income Year Ended June 30, 1931

	New Haven Hospital	William Wirt Winchester Hospital	All Activities	New Haven Dispensary
A Total operating expenses	\$805,154.84	\$206,450.83	\$1,012,605.67	\$71,462.20
B Income from patients	513,195.90	68,626.81	581,822.71	20,651.41
C Free work	292,958.94	137,824.02	430,782.96	50,810.79
D Free work met by supplementary income	234,832.26	128,339.50	363,171.76	49,690.14
1. Income from endowments, funds and free beds	\$99,453.66	\$126,622.05	\$226,075.71	\$ 1,609.51
2. Community chest	36,000.00		36,000.00	19,000.00
3. Yale University appropriation	57,250.00		57,250.00	7,777.00
4. State of Connecticut appropriation	20,000.00		20,000.00	
5. Connecticut Training School income	5,095.55		5,095.55	
6. Miscellaneous income	17,033.05	1,717.45	18,750.50	7,303.63
7. City of New Haven appropriation				14,000.00
E Loss for year	\$58,126.68*	\$9,484.52	\$67,611.20	\$1,120.65

*Includes loss (\$1,120.65) of New Haven Dispensary.

Operating Expenses

Year Ended June 30, 1931

	New Haven Hospital	William Wirt Winchester Hospital	All Activities	New Haven Dispensary
A Administration:				
Salaries, officers and clerks	\$44,366.77	\$9,150.53	\$53,517.30	\$ 6,751.02
Salaries, telephone operators		1,584.53	1,584.53	363.91
Supplies and expenses	6,509.08	1,437.49	7,946.57	495.84
Telephone and telegraph	10,288.79	758.88	11,047.67	840.00
Maintenance and meals				
Professional services:				
Nursing service:	212,022.79	32,480.17	244,502.96	25,830.13
B Salaries:				
Superintendent and assistants	4,445.00		4,445.00	1,609.13
Head Nurses	38,044.21	4,759.00	42,803.21	12,011.00
Supplies and expenses	1,186.56		1,186.56	11,640.00
Maintenance and meals				
Dormitories:				
Wages	13,928.57	660.00	14,588.57	
Repairs and renewals	1,328.47	86.09	1,414.56	
Rent	17,343.79		17,343.79	
Supplies	9,997.71	256.05	10,253.76	
Special nursing:				
Salaries	2,836.59	26.00	2,862.59	
Extra nursing:				
Graduate nurses on floor duty	71,802.51	20,217.48	92,019.99	
Nurse helpers	12,171.84		12,171.84	
Orderlies and ward employees:				
Wages	38,437.52	6,407.55	44,845.07	270.00
Uniforms and supplies	500.02	68.00	568.02	300.00
Maintenance				
Physicians:				
Salaries		6,300.01	6,300.01	6,600.00
Uniforms and expenses			508.17	21.56
Maintenance	508.17	6,300.01	6,808.18	2,400.00

Continued

B Professional services:

	New Haven Hospital		William Wirt Winchester Hospital		All Activities		New Haven Dispensary	
Pharmacy:		\$3,333.28			\$3,142.50	\$3,333.28	\$1,180.00	\$1,780.00
Salaries	\$ 3,142.50	190.78			190.78		600.00	
Supplies and expenses							1,702.00	1,702.00
Maintenance								
Records:		7,470.76				7,470.76		
Salaries	5,808.50				5,808.50			
Supplies and expenses	1,662.26				1,662.26			
X-ray:		29,863.20						7,179.50
Salaries	11,899.50		\$1,812.31		12,802.00	31,675.51		
Supplies and expenses	17,963.70		8902.50		18,873.51		7,179.50	
Dental:		998.27	1,001.28		1,814.50	1,999.55	720.00	750.00
Salaries	858.50		956.00		185.05		30.00	
Supplies and expenses	139.77		45.28					
Meals and laundry		30,829.14				30,829.14		
Operating room:								
Salaries of anaesthetists	5,433.65				5,433.65			
Supplies and expenses	16,192.48				16,192.48			
Oxygen and gas	6,688.95				6,688.95			
Instruments and appliances	2,514.06				2,514.06			
Cystoscopy, electrocardiography, radium, pediatrics, bacteriology, pathology, delivery room:		2,422.63				2,422.63		
Supplies and expenses	2,422.63							
Wards and private rooms:		58,726.88				64,224.58		7,327.35
Drugs and chemicals	18,756.19		2,283.73	5,497.70	21,039.92		923.25	
Alcohol and liquors	1,161.03				1,161.03		395.85	
Instruments and appliances	1,005.65		344.19		1,349.84			
Repairs and renewals	10,402.20		978.17		11,380.37			
Supplies and expenses	22,357.79		1,752.16		24,109.95		6,008.25	
Bedding and linen	5,044.02		139.45		5,183.47			
Orthopedic workshop:		2,489.07				2,489.07		310.98
Salaries	1,823.25				1,823.25		310.98	
Supplies and expenses	665.82				665.82			
Physical therapy:		8,481.18				8,481.18		2,520.00
Salaries and wages	7,795.82				7,795.82		2,520.00	
Supplies and expenses	685.36				685.36			
Laboratory service:		3,300.00				4,451.61		
Medical service or salaries	2,300.00		897.50	1,151.61	3,197.50			
Immunology, service or salaries	1,000.00		254.11		1,000.00			
Supplies and expenses					254.11			
Miscellaneous equipment:		3,677.90				4,243.05		
Repairs								

Continued

		New Haven Hospital		William Wirt Winchester Hospital		All Activities		New Haven Dispensary	
C General services:		\$175,554.92		\$40,949.11		\$216,504.03			
Subsistence:									
Salaries and wages:									
Kitchen		\$ 28,980.66		\$ 6,925.30		\$ 35,905.96			
Dining room		13,603.35		2,521.55		16,124.90			
Supplies and expenses		3,193.05		1,022.79		4,215.84			
Foodstuffs		150,968.92		30,726.86		181,695.78			
Gross		196,745.98		41,196.50		237,942.48			
Reimbursed from various sources		21,191.06		247.39		21,438.45			
Laundry:								\$ 750.00	\$ 750.00
Salaries and wages		26,254.33		6,298.67		32,553.00			
Supplies and expenses		8,912.07				8,912.07			
Gross		35,166.40		6,298.67		41,465.07		\$ 750.00	
Reimbursed from various sources		10,649.33				10,649.33		750.00	
Stores:									
Salaries and wages		3,227.30		780.00		4,007.30			
Supplies and expenses		115.54		6.84		122.38			
Housekeeping:									
Salaries and wages		18,938.30		4,145.65		23,083.95		2,391.60	2,502.30
Supplies and expenses		3,805.44		824.99		4,630.43		110.70	
Dormitories for help:									
Wages		2,241.00				2,241.00			
Supplies and expenses		6,497.84				6,497.84			
Heat, light and power:									
Salaries and wages									
Supplies and expenses		59,984.80		12,268.66		72,253.46		2,444.76	2,444.76
Maintenance of real estate and buildings:									
Salaries and wages		43,970.32		10,913.59		54,883.91			
Supplies and expenses		8,798.50		4,329.12		13,127.62			
Gross		122,743.74		15,242.71		138,000.00		474.50	474.50
Reimbursed from various sources		8,738.84				8,738.84			
Transportation:									
Salaries and wages									
Supplies and expenses									
Inward freight and express									
Ambulance:									
Service of orderly									
Outside service									
Supplies and expenses									

Continued

D	General expense:			
		New Haven Hospital	William Wirt Winchester Hospital	All Activities
	Allowances to miscellaneous accounts	\$ 43,083.65	\$ 1,558.29	\$ 44,641.94
	Damaged goods	\$ 1,120.65		\$ 1,120.65
	Insurance	157.70		157.70
	Publicity	2,569.57	\$ 1,332.09	3,901.66
	Annual reports	245.74		245.74
	Treasurer's and auditor's fees	525.49	210.20	735.69
	Legal and miscellaneous	1,469.58	16.00	1,469.58
	Interest on radium notes	4,912.85		4,928.85
	Interest on first mortgage bonds	385.12		385.12
	Interest on special funds (loan)	26,800.00		26,800.00
	Transfer to compensation fund	4,536.95		4,536.95
		360.00		360.00
	Extraordinary expenses, William Wirt Winchester Hospital:		45,128.75	45,128.75
	Farmer's cottage		608.55	608.55
	Carroll grounds		7,316.86	7,316.86
	Children's Division, camp		7,959.34	7,959.34
	Department of Pediatrics, N. H. Dispensary		1,500.00	1,500.00
	Admission, N. H. Hospital		4,320.00	4,320.00
	T. B. Clinic, N. H. Dispensary		3,424.00	3,424.00
	T. B. Patients, N. H. Hospital		20,000.00	20,000.00
	Total operating expenses	\$806,154.84	\$206,450.83	\$1,012,605.67
				\$71,462.20

III. Income

Year 1930-1931

THE GENERAL HOSPITAL SOCIETY OF CONNECTICUT

	New Haven Hospital	William Wirt Winchester Hospital	All Activities	New Haven Dispensary
A				
Operating Revenue:				
Net Income from Patients (See III A)				
Maintenance Charges	\$392,310.69	\$ 64,994.94	\$457,305.63	\$20,651.41
Special Charges	214,630.71	6,441.84	221,072.55	(Clinic fees)
Total Revenue before deductions	606,941.40	71,436.78	678,378.18	20,651.41
Less Reserve for doubtful accounts and allowances	93,745.50	2,809.97	96,555.47	
	\$513,195.90	\$ 68,626.81	\$581,822.71	
B				
Supplementary Income:				
Endowment Income from				
Free Beds	36,026.99		36,026.99	
Funds available for hospital purposes	38,224.68		164,846.73	
Unrestricted Endowment	5,585.99		5,585.99	
Winchester Fund used for Tuberculosis at N. H.				
Hospital	20,000.00	126,622.05	20,000.00	
Compensation Fund	16.00		16.00	
	99,853.66	126,622.05	226,075.71	1,609.51
Total Endowment Income	99,853.66		226,475.71	
Less Annuities paid	400.00		400.00	
Annual Guarantee Fund				
Community Chest				
Yale University Appropriation	36,000.00		36,000.00	19,000.00
State of Connecticut Appropriation	57,250.00		57,250.00	7,777.00
City of New Haven Appropriation	20,000.00		20,000.00	14,000.00
Connecticut Training School Income				
Miscellaneous Income.	5,095.55		5,095.55	
Donations	17,033.05	1,717.45	18,750.50	7,303.63
Rentals	90.00			
Closed Accounts Collected	1,570.00			
Estate of Rose Porter Annuities Received	12,456.09			
All Other	125.00			
	2,791.96	1,717.45		
Total Income	\$748,028.16	\$196,966.31	\$944,994.47	\$70,341.55

Continued

IIIA. Revenue from Care of Patients

Year 1930-1931

THE GENERAL HOSPITAL SOCIETY OF CONNECTICUT

	<i>New Haven Hospital</i>		<i>William Wirt Winchester Hospital</i>	<i>All Activities</i>	<i>New Haven Dispensary</i>
A	\$392,310.69		\$64,994.94	\$457,305.63	\$20,651.41
Earned from Charges to					
Private Room Patients . . .	\$ 4,520.00		\$ 2,321.44	\$ 6,841.44	
Semi-Private Room Patients . . .	35,983.92		15,400.00	51,383.92	
Ward Patients, viz: . . .	233,676.93		47,273.50	280,950.43	
New Haven Board of Health . . .	15,946.14		7,784.00	23,730.14	
City of New Haven . . .	67,632.00			67,632.00	
Other Cities and Towns . . .	12,448.57		712.00	13,160.57	
State of Connecticut . . .	4,058.49			4,058.49	
United States Marine . . .		1,876.00		1,876.00	
United States Public Health Service . . .		131,715.73		131,715.73	
Self Pay . . .			38,777.50	38,777.50	
Private Pavilion Patients . . .		118,129.84			
Rooms . . .		\$108,933.14			
Semi-Private . . .		9,196.70			
B	214,630.71		6,441.84	221,072.55	\$20,651.41
Earned from Special Charges . . .					
Main Hospital Patients, viz: . . .					
Sales . . .	159,454.93		6,441.84	165,896.77	
Crutches . . .	16,996.66		212.14	17,208.80	
Cystoscopy . . .	198.00			198.00	
Special Nursing . . .	3,972.46			3,972.46	
X-Ray . . .	2,768.55		30.80	2,799.35	
Ambulance . . .	60,026.70		2,462.50	62,489.20	
Operating Room . . .	2,832.25		77.00	2,909.25	
Accident Room . . .	15,339.30		1,997.00	17,336.30	
Delivery Room . . .	14,848.63			14,848.63	
Board . . .	1,665.00			1,665.00	
Telephone and Telegraph . . .	6,787.50		390.90	7,178.40	
	734.53		194.50	929.03	

Continued

B Earned from Special Charges:

	New Haven Hospital	William Wirt Winchester Hospital	All Activities	New Haven Dispensary
Dental Fee	\$ 38.70		\$ 882.20	
Electrocardiography	170.00		170.00	
Radium	115.00		115.00	
Certificates and Abstracts	330.50		330.50	
Laboratory Fees	1,628.00		1,628.00	
Orthopedic	621.40		621.40	
Physical Therapy	18,126.75		18,360.25	
Professional Fees	11,740.00	233.50	11,740.00	
Basal Metabolism	515.00		515.00	
	<u>\$ 55,175.78</u>		<u>\$ 55,175.78</u>	
Private Pavilion Patients, viz:				
Sales	6,850.44		6,850.44	
Crutches	25.50		25.50	
Cystoscopy	614.10		614.10	
X-Ray	7,196.00		7,196.00	
Ambulance	574.00		574.00	
Operating Room	9,195.00		9,195.00	
Delivery Room	3,695.00		3,695.00	
Board	18,267.00		18,267.00	
Telephone and Telegraph	840.49		840.49	
Electrocardiography	110.00		110.00	
Radium	90.00		90.00	
Laboratory Fees	5,026.50		5,026.50	
Orthopedic	2.00		2.00	
Physical Therapy	2,434.75		2,434.75	
Basal Metabolism	255.00		255.00	
	<u>\$ 606,941.40</u>	<u>\$ 71,436.78</u>	<u>\$ 678,378.18</u>	<u>\$ 20,651.41</u>

C Total Revenue from Care of Patients before Reserve for Doubtful Accounts and Allowances

Fund Investments

June 30, 1931

\$ 50,000	Alabama Great Southern R. R. cons. M 5 pct. 1943	\$ 49,750.00
100,000	Allegheny Corp. conv 5 pct. 1944	110,250.00
100,000	American Telephone & Telegraph Co. 5 pct. deb 1965	104,381.25
50,000	Atchison, Topeka & Santa Fe Ry. adj M 4 pct. 1995	38,855.00
100,000	Canadian Pacific Coll. 5 pct. 1954	103,125.00
50,000	Central Pacific deb 5 pct. 1960	48,750.00
75,000	Chicago, Milwaukee, St. Paul & Pacific 50 yr. 5 pct. 1975	69,691.36
52,000	Chicago, Milwaukee, St. Paul & Pacific conv adj 2000	28,363.64
100,000	Cleveland, Cincinnati, Chicago & St. Louis ref 4½ pct. 1977	98,750.00
50,000	Cleveland Union Terminals 1 M 4½ pct. 1977	50,125.00
26,000	Connecticut Power Co. 1 M 5 pct. 1956	24,850.00
100,000	Dominion of Canada 5 pct. 1952	99,525.00
45,000	General Hospital Society of Conn. 1 M 5 pct. 1944	42,400.00
50,000	Great Northern Gen M 7 pct. 1936	56,187.50
20,000	Indiana & Michigan Electric Co. 1 M 5 pct. 1957	18,000.00
100,000	International Tel & Tel 5 pct. deb 1955	97,550.00
100,000	Missouri Pacific R. R. Co. 1st & ref M 5 pct. 1981	95,000.00
50,000	New England Tel & Tel Co. 1st 5 pct. 1952	50,068.75
50,000	New York Central Improvement 5 pct. 2013	49,562.50
50,000	New York Central R. R. Ref. & Imp. 4½ pct. new 2013	49,875.00
50,000	New York, New Haven & Hartford conv 6 pct. 1948	51,113.62
12,000	New York Railways Corp. income 6 pct. 1965	4,000.00
50,000	Pennsylvania R. R. Gen M 4¼ pct. 1981	48,125.00
50,000	Pennsylvania R. R. Gen M 5 pct. 1968	50,075.00
50,000	Province of Ontario 5 pct. 1942	48,750.00
100,000	Public Service of Northern Illinois 1st lien and ref M 4½ pct. 1980	94,000.00
50,000	Reading Co. Gen M 4½ pct. 1997	46,825.00
20,000	Rio Grande Junction Ry. 1 M 5 pct. 1939	19,500.00
100,000	Shawinigan Water & Power (Canada) 1st coll 5 pct. 1970	101,875.00
60,000	Shell Union Oil 5 pct. 1949 with warrants	61,425.00
Shares		
525	Allied Chemical & Dye Corp.	113,000.00
2,000	American Telephone & Telegraph Co.	313,661.63
600	Atchison, Topeka & Santa Fe Ry.	78,820.00
1,030	Borden Co.	79,950.00
500	Chase National Bank of New York	32,738.75
500	Chesapeake & Ohio Ry.	21,812.50
1,000	Consolidated Gas of New York \$5 pfd	98,112.50
500	Consolidated Gas of New York	49,220.00
400	E. I. DuPont de Nemours	38,055.00
200	Edison Electric Illuminating of Boston	36,712.87
500	Florida Power & Light \$7 pfd	53,112.50
5,000	General Electric Co., special stock	54,500.00

1,334	Home Insurance Co.	47,692.25
881	Manhattan Co.	44,416.77
500	Missouri Pacific 5 pct. pfd	59,845.00
291	New Haven Bank, N. B. A.	50,113.75
602	New York Central R. R. Co.	89,299.87
500	Norfolk & Western Ry.	79,075.00
135	Ohio Edison Co. 6 pct. pfd	14,343.75
100	Ohio Edison Co. 6.60 pct. pfd	11,175.00
1,000	Pacific Gas & Electric Co. 6 pct. pfd	28,025.00
250	Pacific Telephone & Telegraph Co.	25,000.00
500	Public Service Corp. of New Jersey	43,475.00
500	Southern Pacific Co.	60,759.37
100	Second Avenue R. R. Corp.	4,000.00
1,040	Standard Oil Co. of California	54,291.62
500	Tidewater Oil pfd	46,937.50
2,597	United Illuminating Co. dep. in voting trust	90,390.83
500	Virginia Electric Power 6 pct. pfd	53,196.00
1,000	United Steel Corp.	171,375.00
4,011 $\frac{3}{4}$	Winchester Repeating Arms Co. pfd	1.00
4,011 $\frac{3}{4}$	Winchester Repeating Arms Co. Class A	1.00
Mortgage Notes:		
	Alpha Sigma Phi Fraternity, Nov. 1, 1910, now Charles G. Bartlett	4,000.00
	Hyman E. Botwick, Aug. 13, 1926, now Isaac Kopkind	5,500.00
	The Berzelius Trust Association, Feb. 6, 1911	9,500.00
	Jacob Caplan, May 31, 1918, now Celia C. Rosenberg	3,000.00
	Peter Paul Contois, July 7, 1926, 6 $\frac{1}{2}$ pct., now Lampson Lumber Co.	3,500.00
	Anna F. Flagg, May 27, 1925, extended to May 27, 1935	6,000.00
	Philip Freedman, Oct. 1, 1906	440.00
	Antonio & Maria Fusco, dated May 21, 1926 payable \$100 on May and Nov. 21st of each year	5,900.00
	Clement A. Greer, Sep. 9, 1926, 6 $\frac{1}{2}$ pct., now West Haven Bank & Trust Co.	4,200.00
	Eugene H. Hill, Jan. 15, 1873, now Frank & Elina Charbonneau	2,000.00
	Charles and Mary Konop, Oct. 25, 1928	4,800.00
	Leo A. Lagor and Dorothy S. Lagor, Apr. 9, 1930, due Apr. 9, 1935	2,300.00
	Marks and Dora Levy, dated July 16, 1891 for \$1,300 and Nov. 6, 1895 for \$200, now Guiseppina D'Armoro	1,450.00
	Charles F. Leizer, Aug. 1, 1895, now John Kretewicz	2,700.00
	Andrea Marino, Jul. 12, 1928, now Marino Construction & Realty Co., Inc.	6,800.00
	Charles G. Maturo, Oct. 19, 1928 due Oct. 19, 1933	3,800.00
	John and Bertha Miller, Mar. 18, 1929 due Mar. 18, 1934, now Michael T. & Bertha Jordan	2,000.00
	New Haven Lodge 290 Loyal Order of Moose, Inc., Jan. 27, 1927.	65,000.00
	Magdalena Nordman, Sep. 15, 1928, now Marie Owen	4,500.00
	H. Perlman & A. Molstein, Jul. 20, 1908, now Abraham Molstein	1,000.00
	Frank W. Powell, Mar. 26, 1930 due Mar. 26, 1935	4,000.00
	Olibio & Michelina Mongillo, Sep. 16, 1926, 6 $\frac{1}{2}$ pct.	5,000.00
	Robert H. Nesbitt, dated Apr. 26, 1924 for \$3,800 and Apr. 3, 1913 for \$7,500	11,300.00
	Isidor Oppor, Apr. 17, 1925 due Apr. 17, 1930	40,000.00
	Edwin Oviatt, Dec. 27, 1910, now Mary E. Bushnell	8,000.00

General Hospital Society of Connecticut

49

Francis J. and Eliz. M. Roche, Jul. 23, 1928	2,500.00
Martha P. Sperling, Mar. 6, 1929 due Mar. 6, 1934	4,000.00
Jacob Salovitz, Mar. 11, 1930	6,500.00
Jackson C. Voss, Jul. 17, 1928	5,500.00
George A. Whitney, Jul. 22, 1926 due Jul. 22, 1931, 6 pct.	8,500.00
William Zeidenberg, Apr. 16, 1919, now Elm City Realty Co.	37,500.00

Demand Notes:

New Haven Hospital:

Jan. 31, 1927	\$25,000.00	
Sep. 29, 1927	25,000.00	
Dec. 15, 1927	20,000.00	
Dec. 6, 1929	15,000.00	85,000.00

Certificate of Deposit for \$10,000, Chicago City Railway, 1 M 5 pct.

1927, 10 pct. paid 5,762.50

Certificate of Deposit for \$51,000, Chicago City Railway, 1 M 5 pct.

1927, 15 pct. paid 26,902.50

Real Estate:

No. 17 Park Street, West Haven, Conn., acquired
through foreclosure of Marino Construction & Realty
Co. mortgage dated Aug. 18, 1925 \$ 4,948.04

Nos. 208-210 Sherman Ave., New Haven, Conn., ac-
quired through foreclosure of Morris Richman mort-
gage dated Mar. 31, 1925 38,398.47 43,346.51

Total \$4,186,059.59

Statement of Special Funds

June 30, 1931

FRANCIS BACON FUND, \$5,011.32: The income from this fund, \$295.91, was transferred to the general income account.

LUCY H. BOARDMAN FUND, \$64,818.29: For the erection and maintenance of the new central administration building. The income from this fund, \$3,826.55, was transferred to the general income account and applied to the expense of maintaining the administration building and for the work carried on therein.

DR. WILLIAM L. BRADLEY FUND, \$5,000: The income from this fund, \$293.58, was transferred to the general income account.

CHARLES F. BROOKER FUND, \$49,190.83: The income from this fund, \$2,902.22, was transferred to the general income account and applied to the support of patients assignable to this fund.

FREDERICK L. DIBBLE FUND, \$250.15: The income from this fund, \$15.85, was transferred to the general income account and applied toward the purchase of medical books and journals.

ANNIE R. WINCHESTER DYE FUND, \$16,789.64: The income from this fund, \$990.33, was transferred to the general income account and applied against the general expenses of the Hospital.

EDWIN FOOTE MEMORIAL BEQUEST, \$152,471.43: For the endowment of free beds in perpetuity. The income from this fund, \$8,996.97, was transferred to the general income account and applied toward the support of patients assignable to this fund.

ELLSWORTH I. FOOTE FUND, \$16,955.94: This fund was increased during June, 1931, by the receipt of \$15,619.58 from the Union & New Haven Trust Co., Trustee under Will of Ellsworth I. Foote. The income from this fund, \$80.23, was transferred to the general income account and applied against expenses of social service.

ELLEN M. GIFFORD FUND, \$50,885.69: The income from this fund, \$3,003.70, was transferred to the general income account and applied toward the support of patients assignable to this fund.

ELLEN M. GIFFORD'S EXECUTORS' FUND, \$240,999.18: The income from this fund, \$14,223.43, was transferred to the general income account and applied toward the support of patients assignable to this fund.

JUSTUS S. HOTCHKISS FUND, \$50,011.34: The income from this fund, \$2,951.73, was transferred to the general income account and applied toward the support of patients assignable to this fund.

SAMUEL E. MERWIN FUND, \$701.96: The income from this fund, \$41.81, was transferred to the general income account and applied against the grounds' expense of the Hospital.

HENRY C. WHITE FUND, \$7,727.80: The income from this fund, \$456.79, was transferred to the general income account and applied against the general expenses of the Hospital.

EMILY M. FITCH FUND, \$203,708.27: For the erection of a ward for children to be known as the William Fitch Ward. The income from this fund, \$11,643.08, was added to the principal of the fund. Of this income, \$856.28 is to be paid into the restricted bank account.

ROSE PORTER, SPECIAL FUND, \$5,000: During the year ended June 30, 1931, the principal of this fund was received from George D. Watrous, Executor of the Will of Rose Porter, for the establishment of a special fund, the principal to remain intact and the income to be used for the support and maintenance of the hospital kindergarten. The income from this fund, \$145.58, was transferred to the general income account and so applied.

COMPENSATION FUND, \$6,846.18: The principal of this fund was increased \$726.22, arising from the following:

Income from investment of funds . . .	\$382.22
Transferred from current funds of Hospital	360.00
	<hr/>
	\$742.22
Less, cost of treating employees entitled to treatment under Compensation Act . .	16.00
	<hr/>
	<u>\$726.22</u>

Of this addition to principal, \$28.49 is to be paid into the restricted bank account.

FOR CARE OF SICK NURSES FUND, \$5,024.58: The income, \$296.58, was expended for the account of patients assignable to this fund.

FREE BEDS FUND, AGGREGATING \$610,502.83: The total income from these funds, \$36,026.99, was transferred to the general income account and applied toward the support of patients on free beds.

UNRESTRICTED ENDOWMENT FUND, \$140,794.80: This fund was increased \$54,450 during the year ended June 30, 1931, the details of which follow:

Subscriptions received:

Mrs. William L. Kingsley	\$ 5,000	Henry W. Farnam	\$10,000
Dr. H. Everton Hosley	600	Harry P. Bartlett	100
Mrs. H. Everton Hosley	650	Mr. and Mrs. Walter E. Crittenden	50
Anonymous	25,000	Mr. and Mrs. Leonard M. Daggett	800
Mr. and Mrs. Thomas Hooker	2,000	William G. Redfield	250
Mrs. Rutherford Trowbridge	10,000		
			<u>\$54,450</u>

The income from this fund, \$5,585.99, was transferred to the general income of the Hospital.

SARAH L. WINCHESTER FUND, \$515,443.76: The income from this fund, \$30,420.61, was transferred to the William Wirt Winchester Hospital income account.

SARAH L. WINCHESTER LEGACY UNDER WILL FUND, \$477,564.44: The book value of the stock of the Winchester Repeating Arms Co. held exclusively for this fund was reduced to a nominal value of \$2 and resulted in a decrease during the year of \$262,498.88 in the amount of this fund. The income from this fund, \$28,184.44, was transferred to the William Wirt Winchester Memorial Hospital income account.

WILLIAM WIRT WINCHESTER FUND, \$1,147,065.97: For the erection and maintenance of the William Wirt Winchester Memorial Hospital for tuberculosis. The changes in this fund during the year are shown as follows:

Balance, July 1, 1930	\$1,162,375.45	
Invested in plant (net of \$375 proceeds sale of equipment) \$	4,762.80	
Reimbursement to general funds of balance of oper- ating deficit at Winches- ter Hospital for year ended June 30, 1930	10,546.68	15,309.48
	<u> </u>	<u> </u>
Balance, July 1, 1931		<u>\$1,147,065.97</u>

The income from this fund, \$68,017, was transferred to the William Wirt Winchester Memorial Hospital income account.

SCHEDULE FREE BED FUNDS

<i>Year</i>	<i>Name</i>	<i>Amount</i>
1870	The Philip Marett	\$155,480.37
1874	The Henry Farnam	5,000.00
1874	The William Fitch	5,000.00
1874	The James E. English	5,000.00
1878	The Ellen M. Gifford	5,000.00
1881-83	The Henry Bronson: two beds	10,000.00
1883	The Thanksgiving	5,000.00
1885	The Henry Hotchkiss Memorial	5,000.00
1886	The William D. Armstrong	5,000.00
1886	The Mary Webster Southgate Trowbridge Memorial	5,000.00
1886	The Dwight Place Society; six months	2,500.00
1888-90	The Dr. Thomas Wells Memorial	5,000.00
1888	The Mary P. Wade of Trinity Church	5,000.00
1888	The Home for the Friendless, six months	2,500.00
1890	The Hermanus M. Welch	5,000.00
1890	The James E. English	25,854.68
1892	The George Thomas Smith Memorial of David Paige Smith, M.D.	5,000.00
1886-1900	The Trinity Church	5,000.00
1901	The Wyllys Atwater Memorial	10,000.00
1901	The Rose Porter Memorial, six months	5,000.00
1904	The Henry B. Harrison	9,712.11
1904	The Mrs. Henry B. Harrison	9,712.10
1905	The Sarah B. Harrison	9,712.10
1905	The New Haven Grays	10,000.00
1905	The Isaphene Hillhouse, six months	5,000.00
1906	The Organized Charities	10,000.00
1908	The Hoadley B. Ives, six months	5,000.00
1909	The John W. Mansfield, six months	5,000.00
1911	The Evelina J. Jones, six months	5,000.00
1911	The Henry Eld Fund in perpetuity	5,000.00
1912	The Leonard J. Sanford and Anna Cutler Memorial	9,720.00
1913-18	The Woman's Seamen's Friend Society of Connecticut	10,000.00
1913	The George W. L. Benedict	10,000.00
1914	The Paul Bed: six months	5,000.00
1915	The Bassett Free Beds; two beds	20,000.00
1915	The George W. Mallory, six months	5,000.00
1917	The Edwin S. Bowditch Bed	10,000.00
1918	The Alfred Blakeslee	10,000.00
1920	The Henry Walter Benedict	10,000.00
1920	The Frank Walter Benedict	10,000.00
1920	The Helen and John T. Manson	10,000.00
1920	The Hannah Jane Winchester Bennett	12,000.00
1921	The Nathan Howell Sanford Memorial Free Bed	10,000.00
1921	The Julia Sanford Memorial Free Bed	10,000.00
1921	The Harriet Atwater Memorial Free Bed	10,000.00
1923	The Deane Free Bed	9,258.16

General Hospital Society of Connecticut

1924	The Whitney Free Bed	\$ 10,400.00
1925	The Leete Bed	15,000.00
1925	The John H. Hopson Free Bed Fund	5,000.00
1926	The Ellen Treadway Yeckley Cot	5,000.00
1926	The Fannie W. Keyes Memorial Free Bed	10,000.00
1927	The Timothy A. Hunt	9,147.57
1927	The Abigail Bradley Hunt	9,147.57
1928	The Ellen M. Gifford's Executors' Fund	5,000.00
1929	The Mary E. Baldwin Free Bed	10,739.45
1930	The Joseph T. Hotchkiss & Mary L. Hotchkiss Bed	15,000.00
1930	The Idalina Darrow Bed	4,371.08

AUDITORS' CERTIFICATE

We have audited the accounts of

THE GENERAL HOSPITAL SOCIETY OF CONNECTICUT

for the fiscal year ended June 30, 1931.

The plant assets, included as capital assets, are shown at book values, before providing for depreciation and before adjustment for buildings razed preparatory to new construction.

Subject to the foregoing, we certify that, in our opinion, the annexed balance sheet sets forth the financial position of the Society as at June 30, 1931, and that the accompanying summary and supplementary schedules of income and expenses show the results of operations for the fiscal year then ended.

LYBRAND, ROSS BROS. & MONTGOMERY,

Accountants and Auditors.

New York, August 5, 1931.

The New Haven Hospital and the New
Haven Dispensary both are beneficiaries
of the New Haven Community Chest.

